

# Toyota 4Runner Installation Manual

## Matters Needing Attention

All the pictures in this manual are for reference only. The pictures may differ from the actual ones, but the installation method is the same.

For your convenience, please read the instruction manual of the product carefully before installation. Please pay attention to protect the surface of your car and avoid scratching.

Please check regularly that all accessories connected to the car are tight to ensure safe use.

## Common Issues

1. Bracket installation reverse: trunk door does not close properly
2. The bracket screw is not replaced as required: the door does not close properly, will damage electric poles
3. The ECU control box is not plugged in properly, loose: there is no force when opening or closing the door or the anti-pinch force is heavy
4. Pole ball head, the circlip is not installed properly: the poles detach during use (check after installation)
5. The connector is not plugged in properly, it falls off: the function fails.
6. The electric suction lock is off center: the door cannot close, the door gap is large, and the tension is tight, which causes the door to open loudly.
7. Installed in a new car for a long time without restarting the car, resulting in low power: door opening or closing not functioning normally, need to restart the car
8. Adding more than 5 kg of soundproof cotton to the tailgate may affect the opening or closing door force, add power to ECU control box.
9. Long press the tail door button for 3-5 seconds till you hear the "beep" sound - the sound is long, loosen hand and push down the tailgate and will hear a "beep beep" sound, completing the programming (the tailgate will not function normally in un-programmed state)
10. When the ball head is wrong, the non-aligned ball head can be rotated 360 degrees.





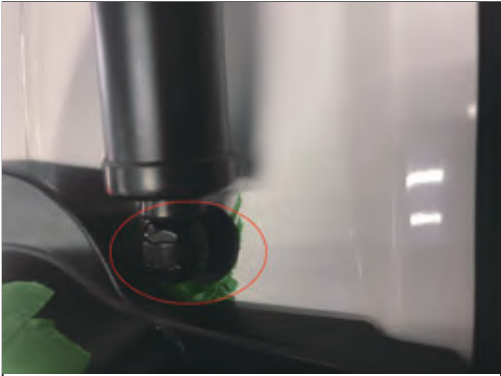
1. Remove the original car trim



2. Remove the right support pole of the original car



3. Remove the lower ball head from left and right of the original car.



4. Installation of the left and right special lower ball head of our company



5. Paste our anti-collision sticker on the original car (left and right alike)



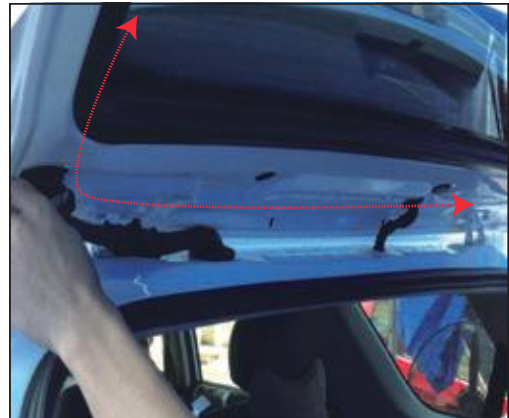
6. Remove the original vehicle bracket and install our special bracket (left and right alike))



7. Installation of left and right electric pole is completed



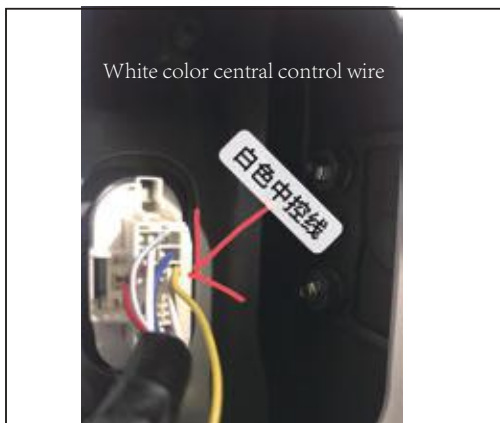
8. Install electric pole wiring on the original vehicle



9. The electric pole threading of the right electric pole wire goes through the left side together.



10. Draw electricity from the original car driver compartment



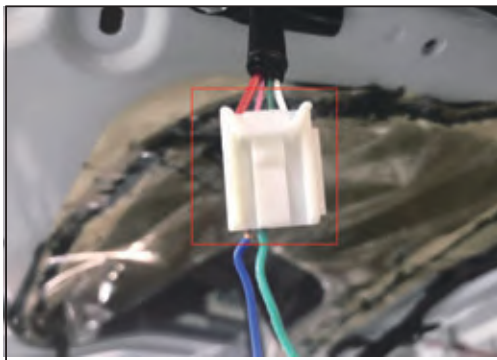
11. Connected the central control wire to the original car B-pillar.



12. Connect grounding under the steering wheel of the original car



13. Remove the original locks and install the electric suction locks of our company, and fix them with screw and flat washer.



14. Plug in electric suction lock plug



15. Remove the original car switch and install the tailgate switch under the main driver compartment



16. Front switch wire docking



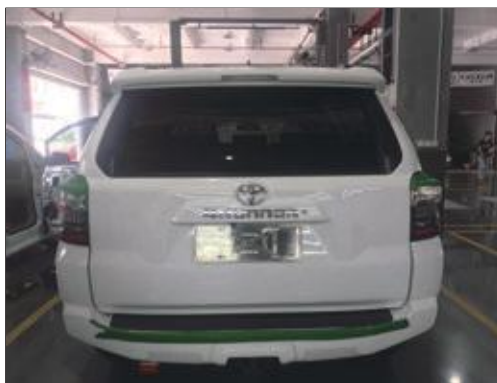
17. The control box is attached to the black color box of the original car. Secure with a tie.



18. Punch hole at tailgate to install tailgate switch



19. Hall wire, central control line and power cable are inserted into our control box one by one according to color.



20. Install tailgate switch, restore vehicle

After the installation is completed, you must set up the tailgate programming settings. Make sure that the doors are closed in place.

(Raise the tailgate to the desired height, press the tailgate switch button, 3-5 seconds will appear a "beep" sound, loosen hand, then press the tailgate button to close, the tailgate is close in place, and there is a "beep" sound, that is, the tailgate programming is completed)

---

### Disclaimer

The related problems and losses caused by improper installation and use are not covered by our company's warranty. Please read this manual carefully before use. Please store carefully after reading, so that you can check it later. The picture is for reference only. The product is subject to the actual object.

---

### Button control mode

- 1: Long press on tailgate button for three seconds to open or close door on the original car remote control
  - 2: Press once on the open/close door button on the front switch.
- 

### Height Setting

Raise the tailgate to the desired height, press the tailgate switch button, 3-5 seconds will appear a "beep" sound, loosen hand, then press the tailgate button to close, the tailgate is closed, and there is a "beep" sound, that is, the tailgate programming is completed

---

### Solution to Electric Tail Door Failure

Fault Phenomenon	Troubleshooting
The original car remote control did not work	Whether the yellow center line connected properly
Does not work after installation is complete	Check if the positive power supply is connected to 12V-16V Check if the power cord fuse is plugged in. Check if the ground wire is connected
Tailgate do not close properly	Whether the left and right brackets of the poles are reversed Whether the control box cables plugged in properly Whether the bracket is fixed or replaced with our special screw There are two vinyls on the left and right sides of the original rear door. If it is loose, it needs to be tighten.
The original car remote cannot close the door	Whether there is any programming after installation. The first time you install on the car, you need to program by using the tailgate button once. Programming steps; open the door and press and hold the door button for three seconds. When you hear a click, release the hand and press the button again. The tail door will automatically close and programming is complete.
The tailgate does not go up halfway	Whether the left and right brackets of the poles are reversed Whether the control box cables is plugged in properly Whether the bracket is fixed or replaced with our special screw